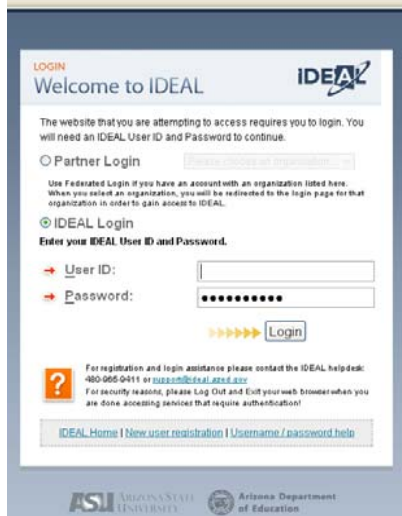


Discover Education Videos 2009 2010

1. Log into IDEAL

- a. <https://www.ideal.azed.gov/>
- b. Don't have an account?
 - i. For registration and login assistance please contact the IDEAL helpdesk:
480-965-9411 or support@ideal.azed.gov

ii.



2. Click on Curriculum Resources



Arizona's eLearning Platform
IDEAL Arizona Department of Education
Arizona State University

Search Help Logout
My Courses My Groups

Welcome back, Kim Thomas.
Sign Out

Announcements

- Superintendent's Corner
- School Improvement
- Curriculum Resources
- Professional Development
- Collaboration
- Personal Workspace
- Support

Announcements

[IDEAL Maintenance 9/25 - 9/28](#)
Submitted by Mark on September 16, 2009 - 12:00.

The IDEAL online environment is being upgraded to allow for new features and functionality. In order to perform this upgrade, the IDEAL environment will be unavailable from 5:00 p.m. Friday, September 25th to 6:00 a.m. on Monday, September 28th, 2009.

[AZTEA/ADE Content Expo](#)
Submitted by Rick Baker on September 11, 2009 - 15:02.

Content Vendor Expo

Who: ALL EDUCATORS..... Teachers, Administrators, Tech Committee Members, Curriculum Directors, Title I Directors, Title II, Title III Directors, ELL coordinators, Gifted coordinators & teachers, Afterschool Coordinators, and all educators interested in 21st century classrooms.

What: Explore multiple technology software and hardware options available for 21st Century Learning Classrooms. The AZTEA Content Vendor Expo will help provide answers to school improvement issues, Title I support, as well as EETT and ARRA funding ideas.

When: Friday, October 2, 2009 11 am – 4 pm Saturday, October 3, 2009 9 am- 2 pm

Where: ASU Walter Cronkite School of Mass Communications located at 555 N. Central in the Channel 8 Studio (thanks to ASSET) on the 6th floor. **PARKING:** Friday, October 2nd (\$5.00 parking lot on the northeast corner of Fillmore and Central). This location can easily be reached by Metro. Get off at the Van Buren location. The ASU Cronkite Building is 1 blocks north. Saturday, all parking downtown is free.

COST: FREE to all Educators

[Fall Professional Development](#)

Discover Education Videos 2009 2010

3. Click on Go by Discovery Education.

Arizona's Learning Platform
iDEAL Arizona Department of Education
Arizona State University

Search Help Logout
My Courses My Groups

Welcome back, Kim Thomas.
Sign Out

- Announcements
- Superintendent's Corner
- School Improvement
- Curriculum Resources**
 - Learning Resource Manager
 - Discovery Streaming
 - Recipes4Success
 - AIMS for Educators
 - Content-Rich Support Materials
 - iTunesU
 - Thinkfinity
 - Formative Assessment
 - Professional Development
 - Collaboration
 - Personal Workspace
 - Support

Curriculum Resources

Learning Resource Manager Go

The Learning Resource Manager is a searchable online database of curricular resources, including trade books, lesson plans, reading passages, media, examples, assessment items, and links to external web sites.

Discovery Education Streaming More Information Go

Discovery Education streaming is a digital video-on-demand and online teaching service to help improve students' retention and test scores; it is aligned to national, state and provincial standards.

Recipes4Success More Information Go

Recipes4Success provides a variety of curriculum resources including Rubric Maker, Graphic Organizer Maker, Bibliography Maker, online tools, and a step-by-step process for implementing project-building with students.

AIMS for Educators Go

Arizona Department of Education AIMS support materials for Teachers.

iTunesU More Information

A space devoted exclusively to education, where it's easy and safe to search for thousands of approved audio and video educational resources.

4. This is the main window where you will begin your searches.

Discovery EDUCATION

Curriculum Standards Search Advanced Search

My DE Streaming DEN

Home Teacher Center Professional Development My Content My Builder Tools My Classroom

SUBJECT/GRADE SEARCH

BY SUBJECT

- Social Studies
- Mathematics
- English/Language Arts
- Science
- Health
- Research/Study Skills
- Teaching Practices
- Visual and Performing Arts
- Careers/Work Place Skills
- World Language

BY GRADE

- K-2
- 3-5
- 6-8
- 9-12

Curriculum Standards Search

Back To School 2009 Week In History Stream a Show

iDEAL

Subscribe to this RSS feed to keep up with DE's most popular content by subject and grade.
Create an RSS Feed

MY BUILDER TOOLS

- Assignment Builder
- Writing Prompt Builder
- Quiz Builder

TEACHER CENTER

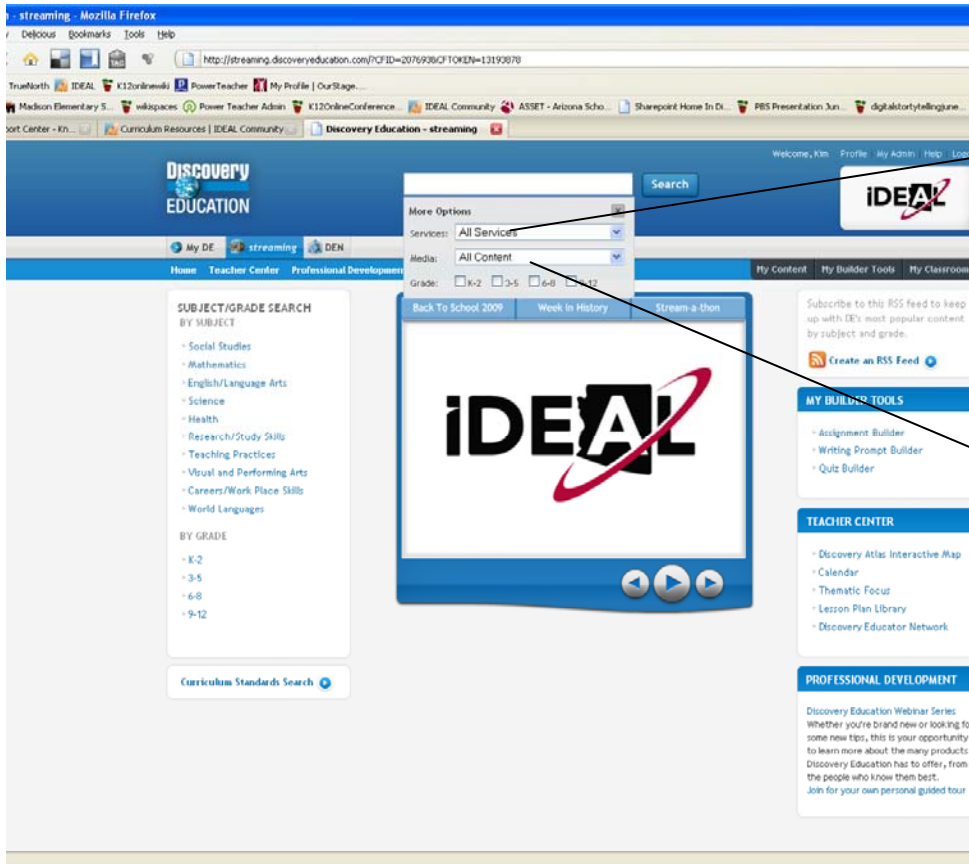
- Discovery Atlas Interactive Map
- Calendar
- Thematic Focus
- Lesson Plan Library
- Discovery Educator Network

PROFESSIONAL DEVELOPMENT

Discovery Education Webinar Series
Whether you're brand new or looking for some new tips, this is your opportunity to learn more about the many products Discovery Education has to offer, from the people who know them best.
Join for your own personal guided tour

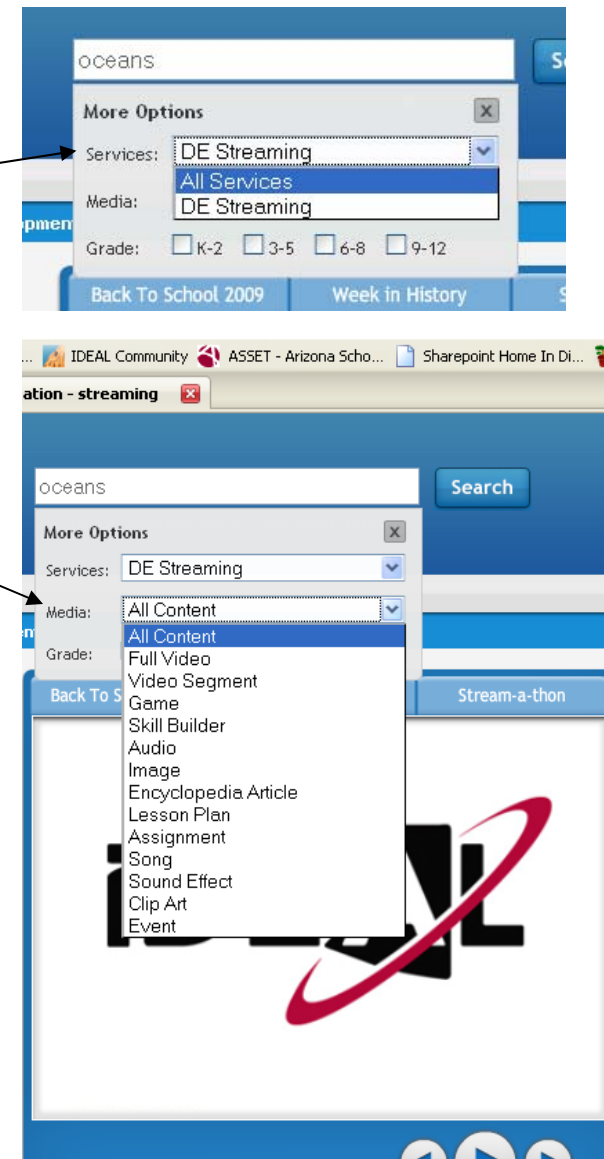
Discover Education Videos 2009 2010

- Click in the search field to get more options. In Services you will want to use the pull down menu and pick DE Streaming.



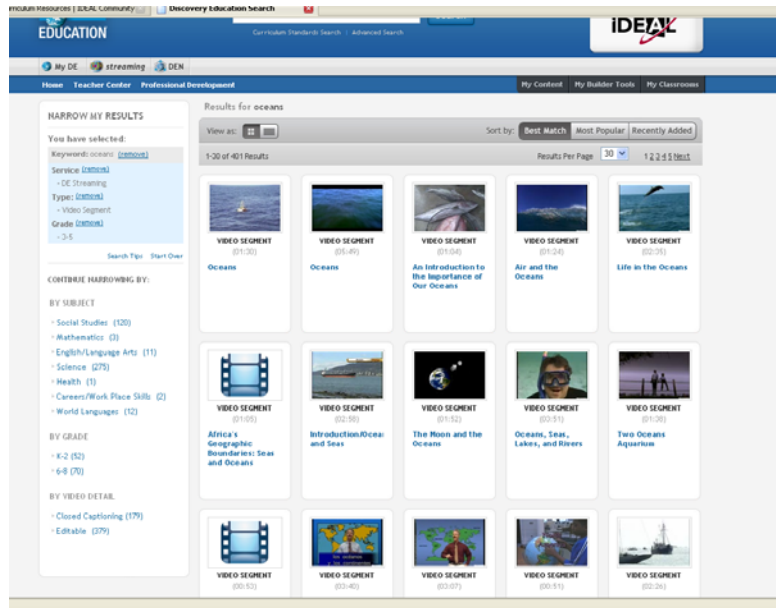
In Media you have several options.

- Fill in the search fields and click on Search.

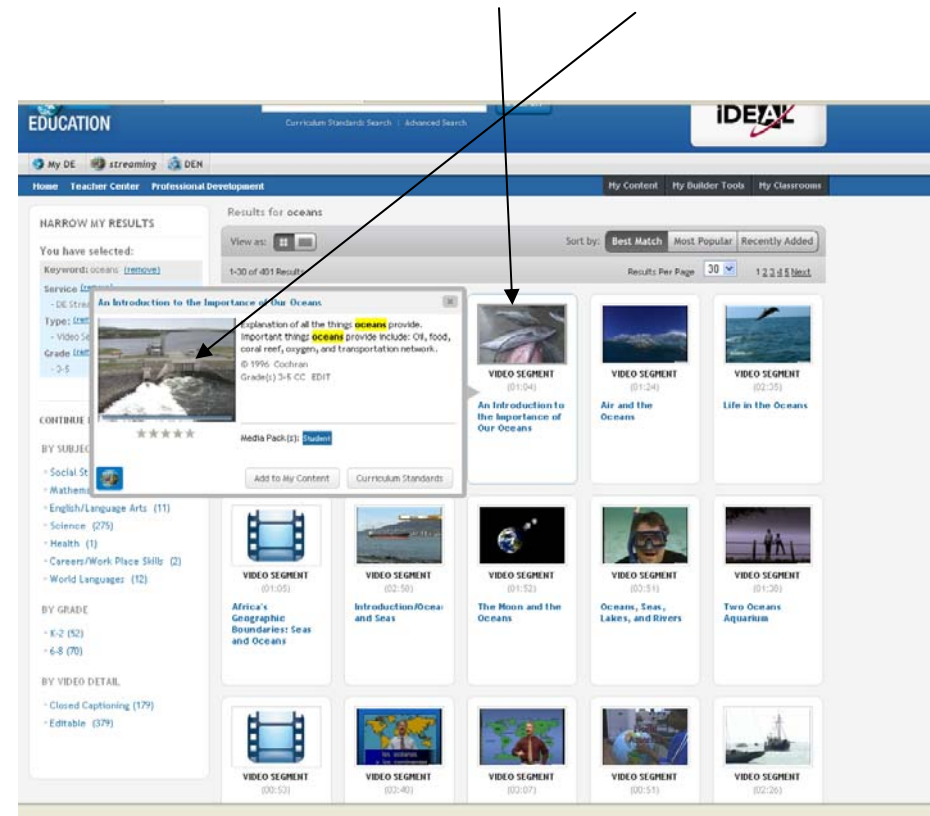


Discover Education Videos 2009 2010

7. This provides a great visual for the videos that are available.
 - a. To learn more about a video simply place you mouse on the video thumbnail picture. (See next screen shot.)

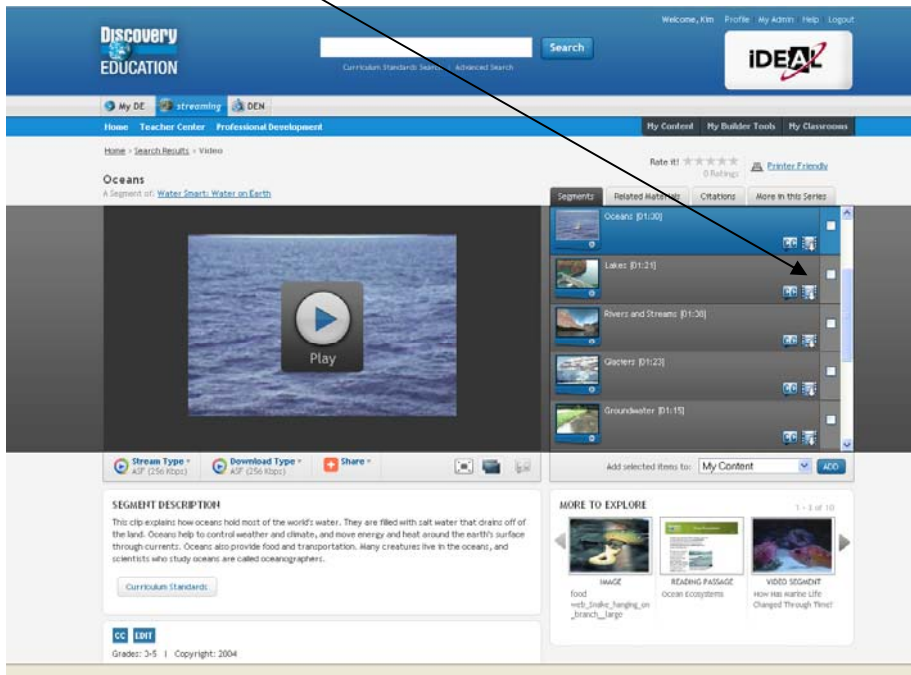


8. To view and/or download videos click on the thumbnail picture.
This can be the thumbnail on the webpage or the pop-up window.

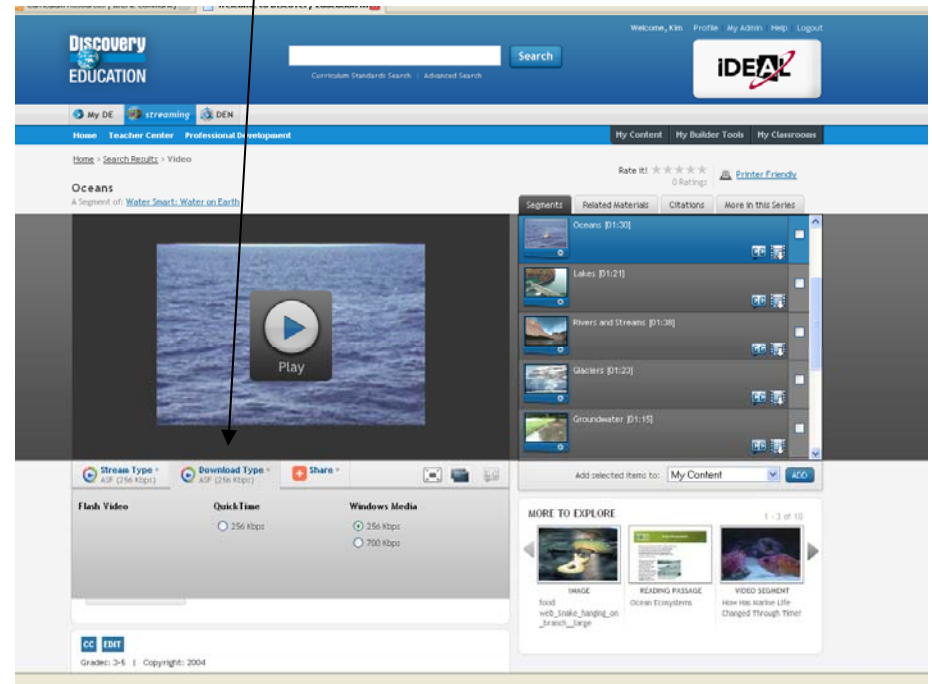


Discover Education Videos 2009 2010

9. This is where you can preview and/or download videos. To preview click on Play. To download click on the filmstrip icon with the arrow pointing down.



10. One more item to keep in mind. You will probably want to download the videos in a Windows Media Player format. To do this Click on Download Type and pick Windows Media Player.



Did you notice that you had two options under Windows Media? 256 or 700 kbps. You will want to pick the 256. This is for users with standard internet access.